



HOLBROOKE STUDIO

RICHMOND

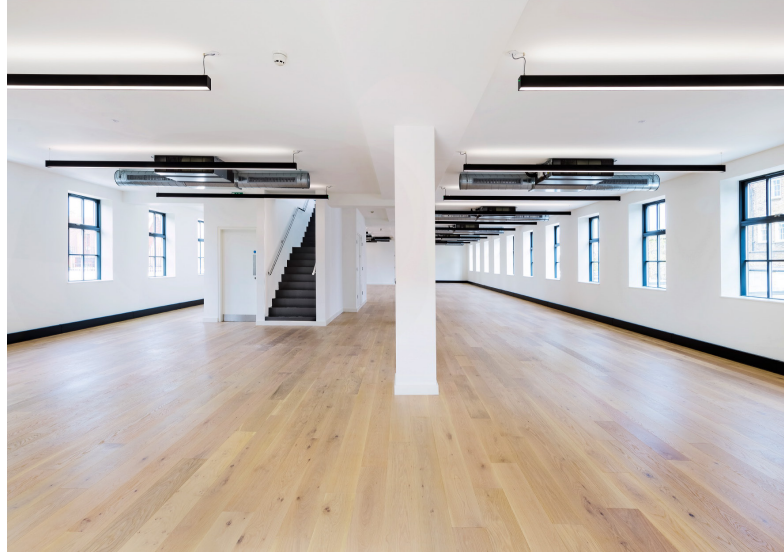
4,311 to
14,150 sq ft

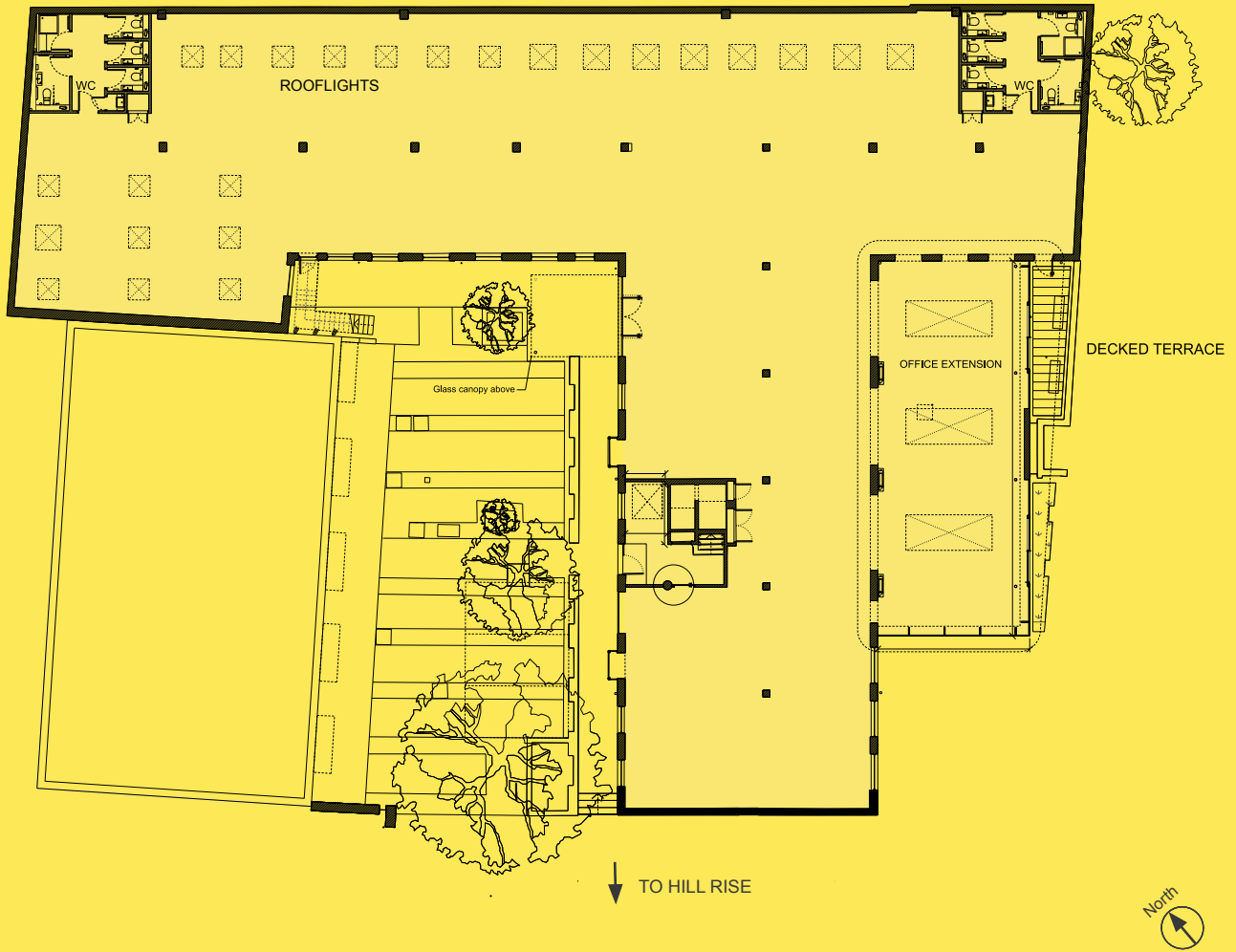
A headquarters building or space for two separate businesses.

Presenting as the perfect space to grow your business, Holbrooke Studio has been designed with City workspace trends in mind so you can attract and retain talent with this brand new warehouse style refurbishment.

Holbrooke Studio is located in a secluded mews at the foot of Richmond Hill in the heart of Richmond town centre set amongst a wealth of curated cafes and bars. You'll have everyday local amenities on the doorstep, exceptional commutability to central London, enviable green surroundings to encourage wellbeing and an superb riverside setting to impress clients. This is a workspace to work for you.

Cutting edge
Restoration
City style
Destination
Workplace
Coffee, cafes &
Croissants.
Green spaces
Room to breathe
More connections
More options





GROUND FLOOR
9,839 SQ FT

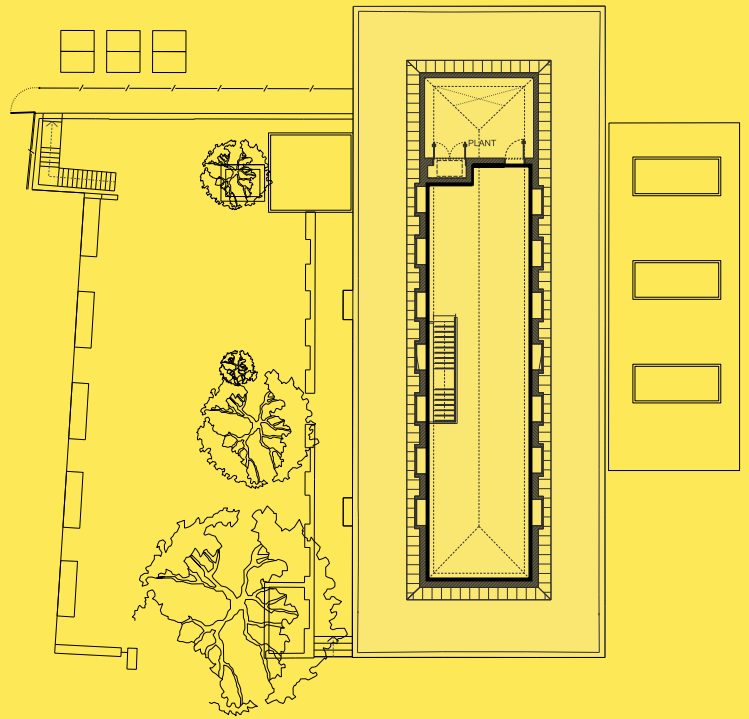
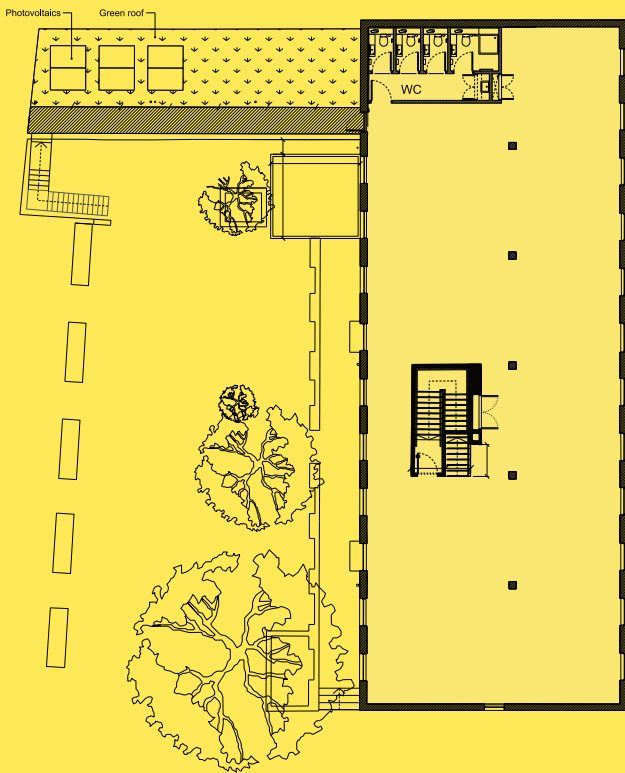
SPECIFICATION

Holbrooke Studio is a three story self-contained office building which has undergone comprehensive refurbishment, to include:

- Brand new heating, cooling and air conditioning systems
- Exposed services with contemporary finishes
- Suspended LED light fittings with daylight dimming and presence control
- Newly constructed second floor extension offering light/bright space
- Brand new WCs
- 3 x new showers
- New openable windows
- Wide plank wood flooring
- Fibre telecoms connections enabled
- Parking available
- Bicycle racks

LEVEL 1 3,260 SQ FT

LEVEL 2 1,051 SQ FT



COMBINED TO OFFER
4,311 SQ FT

Floor / Unit	Sq ft	Availability
Ground	9,839	Available now
1st	3,260	Available now
2nd	1,051	Available now
Total	14,150	

ACCOMMODATION

Holbrooke Studio has been configured to offer great versatility.

The building can be occupied by a single business creating a statement headquarters. Alternatively, first and second floors can combine to create duplex office space leaving the ground floor as a separate space offering open plan, warehouse style accommodation.



SOUTH ELEVATION



D I G M E
FITNESS

THE IVY

GAUCHO



LOCATION

Richmond is an established location for businesses seeking to locate in an area with first-class retail and an array of dining options. The highly prized residential catchment provides a large pool of talent in search of an excellent work life balance.

Perfectly positioned and serviced by both London Overground and Underground networks, Richmond is the ideal location for today's leading businesses relying on full global connectivity with Heathrow Airport literally on the door step.

Outside of the office, Richmond boasts an abundance of open spaces and attractions; including Richmond Green, Richmond Park, Hampton Court Palace and Kew Gardens.





TRAIN	MINS
Clapham JCT	9
Willesden JCT	17
Waterloo	19
Wimbledon	25
Stratford	60

UNDERGROUND	MINS
Hammersmith	16
Earls Court	23
Victoria	25
Bank	37
Embankment	34

AIRPORT	MINS
Heathrow	36
Gatwick	40

(source TFL)



Contacts



+44 (0)203 147 1112
stuart.austin@eu.jll.com

+44 (0)207 399 5139
abbie.smith@eu.jll.com



+44(0)208 940 2266
d.arthur@martincampbell.co.uk
j.demattos@martincampbell.co.uk

Holbrooke Studio, Holbrooke Place,
Richmond, Surrey,
TW10 6UD

JLL for themselves and for the vendors or lessors of this property whose agents they are, give notice that: The particulars are set out as a general outline only for guidance and do not constitute, nor constitute part of, an offer or contract; All descriptions, dimensions, references to condition and necessary permissions for use and occupation, and other details are believed to be correct, but any intending purchasers, tenants or third parties should not rely on them as statements or representations of fact but satisfy themselves that they are correct by inspection or otherwise; No person in the employment of JLL has any authority to make or give any representation or warranty whatever in relation to the property; Any images may be computer generated. Any photographs show only certain parts of the property as they appeared at the time they were taken.